

Thank-you for viewing Dr. Daniel A. Medalie's website. Everything in this document is important. Please take the time to read it carefully before you contact the office or his patient care coordinator, Valerie.

Phone #: 216-393-9924

Fax #: 216-393-9925

SCHEDULING SURGERY IF YOU LIVE OUT OF TOWN

If you are local to the Cleveland area within 60 minutes of our office, I want to see you in the office for an in-person consultation. Please call our office to set up an appointment. You will need clearance letters from mental health providers in order to schedule surgery. Please see below for information regarding the therapist letters.

I frequently perform operations on FtM patients who live out of town and are unable to easily to see me in consultation prior to the procedure. I have several requirements for these patients:

1. I must have a clearance letter from a therapist that you have seen for at least 1 year. If you haven't seen a therapist for at least 1 year, you will need two clearance letters for surgery. One letter needs to be with a mental health provider that you have seen for at least 6 months. The other letter can be a 1 time assessment with a different mental health provider confirming the diagnosis of gender dysphoria. One of the mental health providers needs to have a degree of PhD or MD (psychologist or psychiatrist). The letters must adhere to WPATH standards and state that you have been diagnosed with gender dysphoria and are a good candidate mastectomy surgery. The letters need to state that you understand the surgery is irreversible and life-changing. This must be sent to us (e-mail, fax or mail) before we schedule the surgery. Every year criteria changes and some patients claim that a letter is no longer required. For my patients, a letter is always required. (I do not require patients to be taking testosterone)
2. I must see pictures prior to scheduling surgery (front view of chest and each side view with arms at your sides). Please do not hold the camera yourself as that distorts the chest.
3. Patients need to go to my website under the transgender top surgery section and download a history form (there is an easily visible link to the form), fill it out, and email it to my patient care coordinator, Valerie. (valerie@clevelandplasticsurgery.com)
4. I am booking about 1 – 2 months out for surgery.

Typically, I will perform a phone consultation with a patient 2-4 weeks prior to surgery. The patient will then come into town the evening prior to the procedure. This ensures that there are no issues with travel the day of surgery. I will then perform the operation and see them back in my clinic in 5-7 days to remove drains and change the dressing. This means that the patient will spend around 1 week in the Cleveland area. Patients who live far away, but can drive to Cleveland (2-6 hrs.), can go home the next day and drive back to see me for their first post-operative appointment (they must stay in town for at least 24 hours post-surgery). I will then follow the progress of the patient via e-mailed pictures on a weekly basis.

Occasionally I have had patients who have gone home and had their primary care doctor remove the drains and perform the first dressing change. I do not prefer this but do allow it if the patient can assure me of good care and that arrangements have been made prior to surgery. If having post-op visit at home, the drains need to stay in for at least seven days.

My patient care coordinator, Valerie, has information about hotels in the area as well as financing. For all logistical details, she is the best person to contact. Her e-mail is valerie@clevelandplasticsurgery.com.

FEES

Typical operation times average 1.5-2.0 hours (both for the peri-areolar and double incision with grafting procedures). The average patient spends around \$8500-9500 for a procedure (this includes all fees- anesthesia, facility, surgeon). The variability stems from the fact that I sometimes perform more or less extensive procedures (very heavy patients with large breasts require more time for surgery, and peri procedures in general take longer than DI).

Revisions (removal of "dog ears" etc.) are a separate procedure and can usually be performed with local anesthesia in my clinic procedure room 9-12 months after the primary surgery. There is a cost associated with revisions, but usually it is fairly

low (on the order of \$500-1000). If there was a problem with the initial procedure and a complication arose that resulted in a worse scar etc. I will not charge for the revision.

We do accept financing through CareCredit (www.carecredit.com), Alphaeon Credit (www.alphaeon.com) and PatientFi (www.patientfi.com). Please go to the company website and search for Dr. Medalie to begin your application. We also have links on our website under financing. The financing options that we accept with CareCredit and Alphaeon Credit are the 6 month/no interest plan or the 24 or 36 month extended plans. The extended plans have interest.

INSURANCE COVERAGE (please read carefully!)

Many patients ask whether we accept insurance coverage for these procedures. We no longer accept insurance for any portion of the procedure. We have a letter with standard codes that we will give to you after surgery if you want to try and seek reimbursement. The codes for the surgery will be simple mastectomy and nipple reconstruction (CPT 19303 x 2, 19350 x 2) and the diagnosis code will be gender dysphoria (ICD-10: F64.9). Do not ask us to contact your insurance company. We will not do it. Because we are not taking insurance, we will not be able to submit a claim form to your insurance company. Some insurance companies ask for a prior authorization letter. We will not provide a prior authorization letter to your insurance company. You may want to check with your therapist or primary care doctor to see if they would be willing to write this letter if you need it.

THERAPIST LETTER

Dr. Medalie adheres to the guidelines and principles of the World Professional Association for Transgender Health (www.wpath.org). Prior to any surgical procedure, prospective patients must have two letters of referral from mental health providers (psychiatrist, psychologist or licensed social worker) unless they have seen their therapist for over 1 year then only 1 letter is required. See requirements for letters on page 1.

ACTIVITY AFTER SURGERY

You can raise your arms up and out on occasion with daily activities. Do not raise your arms in a repetitive motion or lift anything weighing more than 10 lbs. for at least 8 weeks after surgery. Backpacks can be worn if they do not cross the nipples. If possible, do not wear a backpack until 8 weeks post-op. You may swim once incisions and grafts are healed – usually 6-8 weeks. No lifting weights, pushups, bike riding, jogging/running and any other extreme upper body workout for 8 weeks. After 8 weeks, all restrictions are lifted but you need to start out slow.

RETURN TO WORK/SCHOOL

Dr. Medalie recommends taking off at least two weeks from work/school. After that, you can return with lifting restrictions for another 6 weeks. If you can't work with lifting restrictions, you will need to take off the entire recovery period.

CONTACT

I would be more than happy to discuss any of these procedures in more depth either by e-mail or in my clinic. If a patient lives far away, then pictures e-mailed or sent to me can help me determine what the best operative course might be. Please contact Valerie first to get things started.

My patient care coordinator: valerie@clevelandplasticsurgery.com

My nurse: michelle@clevelandplasticsurgery.com

RESULTS

Many of my patients have posted their results on the website, www.transbucket.com. Please note that some of these do not show the before shots or are taken at variable times after the surgery. The best results are not observed for at least 1 year post-op. I do encourage all prospective patients to visit this site since many surgeons are listed and you can compare the results for yourself. Many patients have also posted on Instagram and Youtube, and I encourage you to search for my name on those sites as well.

Please note that I now have several instructional videos on YouTube that describes FtM top surgery. These are the links:

<http://www.youtube.com/watch?v=DHwKOto7J3k>

<http://www.youtube.com/watch?v=qEKPz5zuDjc>

<http://www.youtube.com/watch?v=h1UealCPtnU>

Chest Reduction Surgery:

The procedures are based on the following:

- Size and shape of breast
- Elasticity of skin
- Patient's needs and preferences

In general, patients who have smaller breasts can have the entire surgery performed in a keyhole pattern or in an incision around the areola (“peri-areolar or “purse-string” mastopexy). If the patient is willing to return for an additional procedure if necessary (revision of irregular scars-which are common), this is a very reasonable approach. In those patients with a large amount of breast tissue with excessive skin of poor quality and droop, it is always recommended to remove the excess skin and breast tissue in the crease of the pectoralis muscles (elliptical or double skin excision mastectomy DI) and put the nipples back on as grafts. This surgery has the advantage of immediate and predictable results. I can contour the skin flaps and place the nipples where I want to. It has the disadvantage of permanently altering the sensation and erectile capacity of the nipples, and it leaves larger scars on the chest. Over time they fade and flatten out. Any of these operations can permanently affect sensation to the chest wall and nipple area. The peri-areolar procedure in borderline patients (“B” cup) can result in nipple loss because of the tenuous blood supply. Chest surgery is routinely done as an outpatient surgery. Silicone drains will be placed that will have to be removed in five to seven days. These drains help keep the tissues approximated and remove excess fluid. Removal is quite simple and can be done by any health care provider. If the elliptical (double incision) mastectomy is performed then the dressing holding the nipples in place needs to be removed at five to seven days.

I have patients that ask to opt out of having the nipple grafts and consider just getting tattoos. This is something that I am unwilling to do. Nipples are part of the normal human anatomy and I am only comfortable performing surgery to create natural results. Additionally, the nipple/areolar complex is unique and can't be reconstructed once thrown away.

Below is a patient who underwent peri-areolar surgery. The surgery starts with a cookie cutter around the nipple/areolar complex to make it smaller. The surrounding skin is then de-epithelialized, and then a subcutaneous mastectomy is performed. Once the breast tissue is gone, a drain is placed and the incision for the mastectomy is closed. The surrounding skin is then closed down to the smaller areolar with a purse- string suture (like a bag of marbles). This results in scalloping and bunching of the skin, but tightens the surrounding chest skin and elevates the nipples some. Because of the motion of the arms and the underlying pectoralis muscle after surgery, these scars invariably widen and develop an irregular appearance (as in the final post-op picture). I find that my peri-areolar patients ask for more revisions than my double incision patients. I can prevent this by extending the incision to create a true “keyhole” this results in a scar like a lollipop (i.e. a circle around the nipple and a descending vertical line). The advantage of this is more precise control of nipple/areolar position and size, and less irregularity of the scar. The disadvantage is the longer scar (which defeats the purpose somewhat of the peri approach).



Pre-op peri-areolar



Areola resized and surrounding skin removed



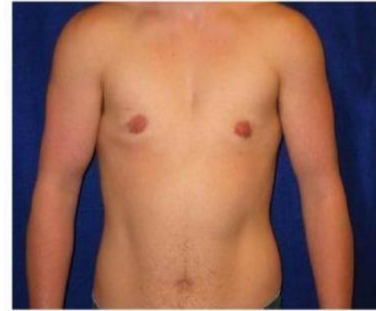
Subcutaneous mastectomy performed



Breast tissue now gone



Purse string closure of skin to smaller nipple



3 months post-op

Some small chested patients can have an even more limited procedure where only a partial incision is made around the areola. This ensures the blood supply to the nipple but does nothing to take up any loose skin that may result from the subcutaneous mastectomy. I recommend this only for very small chested patients with good elastic skin tone. If done on the right patient, the results can be excellent. The example below is liposuction in combination with subcutaneous mastectomy via a partial areolar incision from the 4-8 o'clock position around the nipple.



Before



After



Before



After

Immediately below is an example of DI (double incision) mastectomy with nipple grafting at six months. Note that the red scars take up to a year to fade. The next picture shows a different patient at 9 months post-op. The last picture is of a patient 2 years after top surgery and hormone therapy.



Before



After



Before



After

Hormone Therapy and “Top” Surgery



TOP SURGERY REVISIONS:

I get contacted by many patients who have had top surgery and are now seeking a revision of their chest. If they are my own patients seeking revision, the problems are almost always small and can be taken care of under local anesthesia in my clinic (touch up lipo or dog ear revision). Usually when I am contacted by a patient who has had a procedure by another physician the results are quite poor and the patient needs to go back to the OR for a successful outcome. Below is the before and after photos of a patient who initially had his top surgery by another surgeon. I completely revised the scars and nipples and was able to give him a much improved chest contour. I would be happy to review any before and after photos a prospective patient wishes to send me, and I will do my best to give an idea of what might be necessary to improve the cosmetic outcome.



SCARRING:

Many patients ask about what the scars will look like (especially for the double incision surgery DI). The patient below posted these himself on [Transbucket](#). He shows how his scars have evolved from 1 week after top surgery to 1 month, to 3 months and finally to 2 years post mastectomy. The scars which are quite visible initially fade over time and fall into the line of the pectoralis major muscle of the chest. This is an important point because many patients are afraid of the DI because of how the scars look. I think that the DI can give a better result with better contouring of the chest and nipple position than a peri-areolar procedure in the right patient. That does not mean that it is the best choice for all people and this is an important conversation that I have with all of my top surgery patients. But it should reassure prospective surgery patients that very good results are possible with DI surgery.



Risks and Complications:

Obviously, procedures such as this are not without risks or complications and I want to review these with you.

- **Bleeding:** Bleeding is a risk of any operation, but the need for transfusion is extremely unlikely. More likely is the unwanted collection of blood beneath the skin (hematoma). This may require simple monitoring or possibly another procedure to drain the excess blood. It is most common in the first 24 hours after surgery and that is why I require patients to stay in town for at least that amount of time. Blood that is left sitting under the skin can result in unwanted asymmetry or even infection. Sometime s a patient will come back for the first post-op visit and have a small to medium hematoma. I may choose to leave the drain in for longer or offer to drain the hematoma with a small suction catheter at the time of follow-up. Over the course of 3 months, most of the residual hematoma will dissolve and the end aesthetic result is usually good.
- **Infection:** Infections are rare complications and usually treated with a course of oral antibiotics.
- **Nipple complications:** The nature of mastectomy is to remove tissue and by necessity small nerves. While there is some regeneration, sensation changes such as hypersensitivity or partial numbness can occur. When the nipples are used as grafts, there will be a loss of sensation and erectile capacity. The blood supply of the nipple might be damaged with the more extensive surgery, and the nipple could die (particularly in smokers). If the nipples are used as grafts, then it is also possible that they might not survive (full loss is very unlikely, but partial loss can happen). These complications are rare in my experience. Dark skinned patients who have nipple grafts will invariably have some depigmentation of the nipples. This improves slowly over time but may ultimately require tattooing.
- **Scarring:** The scars of the areola grafts usually heal very well, but the scars of the peri-areolar mastopexy can be bunched and pleated. Over time they will flatten out, but it is quite possible that they will need to be revised at a later date. The scars below the pectoral muscles (present in removal of large breasts) will take longer to fade out and will widen as mentioned above; however, a raised or excessively wide scar is possible and might need further treatment. It is possible that there may be residual fatty tissue left, which appears as a contour deformity (especially at the sides where they are called “dog ears”). This is more common in large patients and can be removed at a second stage (usually under local anesthesia).
- **Other risks:** Depression of the skin where the breast tissue was removed is a risk and possible complication. The possibility of this complication can be reduced or avoided by leaving some breast tissue on the skin. Since not all the breast tissue is removed, you are still at risk for developing breast cancer, and therefore, you should still be vigilant in routine self-exam and screening for breast cancer.
- ****Smoking is the number one reason that patients have peri-operative complications (loss or death of tissue). If you smoke, you must quit completely (no nicotine patch, vaping etc.) for three months prior to the procedure.****

OTHER PROCEDURES

Many patients ask whether other procedures can be performed concurrently with the top surgery. The most common procedure asked about is **liposuction of the flanks, hips and abdomen**. I do this frequently to help contour the whole trunk and would be happy to discuss this with any prospective patient. Please include the whole trunk (front and back) in the photos sent to me so that I can effectively evaluate you. The cost is variable and depends on the extent of extra liposuction performed and the anticipated time that it will take.